

# GLOBAL MARINE CELLULAR ANTENNA



**9dB GAIN MULTI-BAND**

**800 SERIES**

Digital Antenna's new global marine cellular antennas are the first ALL BAND marine cellular antennas and are designed and manufactured for all cellular systems, including third generation (3G) and WCDMA technology.

With a powerful 9dB gain and professional marine grade construction, these omni-directional cellular antennas improve signals on all cellular bands (850, 900, 1800, 1900 and 2100 MHz) and deliver high performance that will last for years. Each antenna is designed for easy connection to your cell phone or amplifier.

For maximum cellular range up to 50+ miles, use with Digital Antenna's PowerMax™ North American (DA4000) or Euro/Asian (DA4000E) cellular amplifiers.

All of our antennas are made in the USA, assembled, tested and tuned by hand for maximum performance, quality and durability.

## 800 Series:

861-CW | 861-CB

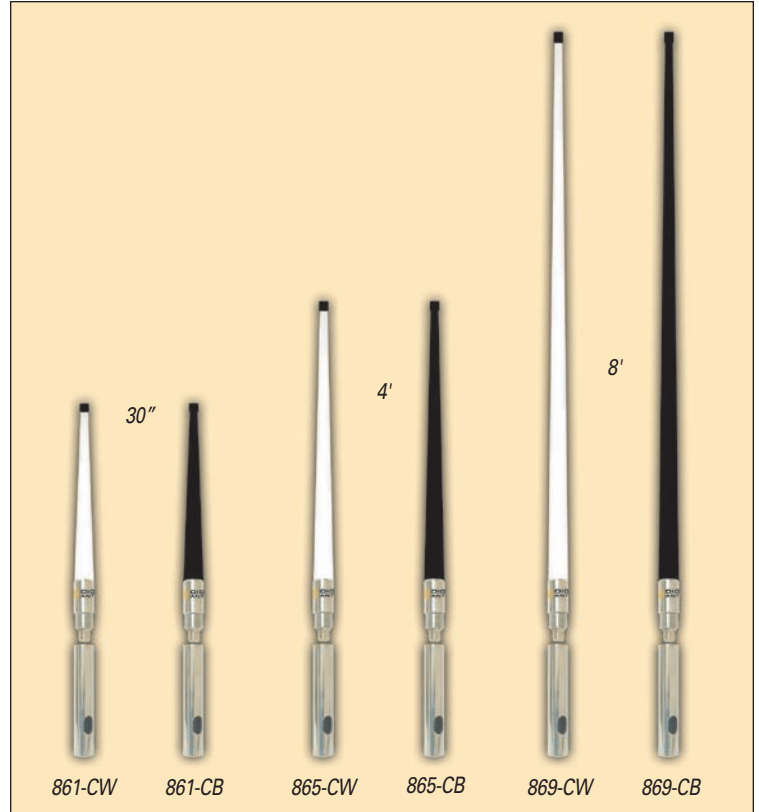
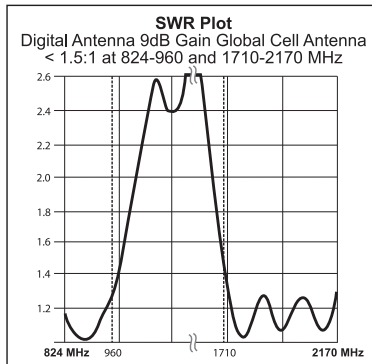
865-CW | 865-CB

869-CW | 869-CB

**Mount:** Stainless steel double female ferrule for mounting 1"-14 threaded base.

**Connector:** Highest quality Type N female.

**Cable:** Not included – use Digital Antenna's PowerMax™ Cable.



## Product Technical Specifications

PNs 861-CW | 861-CB, 865-CW | 865-CB, 869-CW | 869-CB

<b>Radiation Pattern</b>	Omni-Directional
<b>Gain</b>	9dBi
<b>Bandwidth VSWR</b>	< 1.5:1 = 824-960 and 1710-2170 MHz
<b>Impedance</b>	50 ohms
<b>Max Input Power</b>	250 watts
<b>Dimensions</b>	30" l x 1" tapered OD
<b>Exterior Finish</b>	White, UV stable poly-urethane coating
<b>Ferrule</b>	316 Stainless Steel
<b>Wind Rating</b>	125 mph
<b>Weight</b>	1.6 lbs
<b>RF Connector</b>	Type N female
<b>Installation</b>	1"-14 threaded double female ferrule



Digital Antenna, Inc.  
www.digitalantenna.com

5325 NW 108th Avenue  
Sunrise, FL 33351

t 954.747.7022  
f 954.747.7088